

Igniter Bracket and Shield Installation, 826-2010

Follow these steps to install a new igniter bracket and burner shield in a Dean flatbottom fryer: **NOTE:** This kit is to be installed while the fryer is dismantled for the installation of kit 826-2006.

1. Remove power from the unit.
2. Remove the brace securing the burner tubes. **See figure 1.**
3. Remove the burner tubes by lifting them from the orifices and pulling backwards.
4. Remove the burner shield, which is suspended below the burner box on tabs. The shield must be removed through the back of the fryer. **See figure 2.**
5. Remove the single screw that secures the igniter bracket in place. **See figure 2.**
6. Remove the existing bracket and position the new bracket. **See figure 3.**
7. Position the igniter and bracket and secure with existing screw.
8. Remove the grommet material from the existing burner shield and attach to the new shield. **See figure 2.**
9. Position the new shield.
10. Return the burner tubes, ensuring the igniter's spark elements are properly positioned above the burner tube. **See figure 4.**
11. Replace the brace securing the burner tubes.
12. Return power to the unit and test.

In Kit 826-2010		
Part #	Description	Quantity
823-3170	Burner shield	1
210-6184	Igniter bracket	1
819-6033	Instructions	1

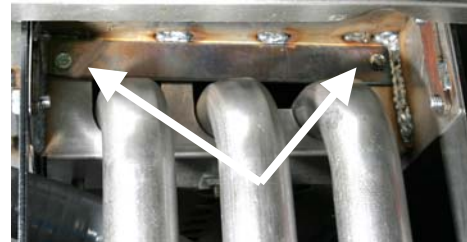


Figure 1: Two 1/4" screws secure the brace holding the burner tubes.

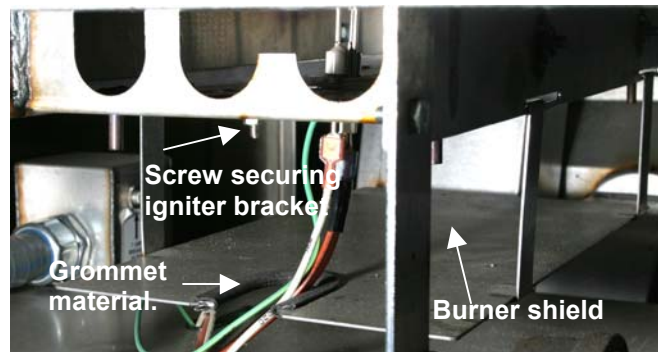


Figure 2: The burner shield, which is suspended with tabs from the burner box, is replaced in this kit as is the bracket securing the igniter.



Figure 3: The new bracket is shown behind the existing bracket. Attach it, in the position shown, with a single screw, which secures it to the igniter assembly.



Figure 4: Before the final burner tube is inserted, ensure the igniter elements are positioned, as shown, above the burner tubes.